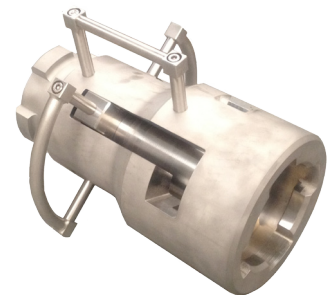


Linear Actuator Override Tool

ROV Tools.



DESCRIPTION

FORUM has developed a range of tools to operate various linear actuator override tool interfaces. Interfaces available are ISO 13628-8 Type A, ISO 13628-8 Type C and customer specific two lug interface. Tools are available in a range of loads up to 120 tonnes. The tool supplied usually comprises two parts, the Locking Head, and the Actuator. The actuator contains a hydraulically operated piston powered by an intensifier. Actuators can be supplied with hot stabs and check valves. The locking head is a purely mechanical device and is left behind on a subsea interface when the valve is required to be let overridden. A range of strokes are available to suit specific applications.

Most of the tools are manipulator operated but tooling deployment versions of the tools are available that require no manipulator intervention.

For full product range see sales drawing A001-360-015

FEATURES

- Range of interfaces
- Up to 120 Tonne Force
- Range of strokes.
- Hydraulic Set, Mechanical Locked
- Manipulator or TDU deployed.
- Supplied in offshore suitable transit case.

Linear Actuator Override Tool

ROV Tools.

SPECIFICATIONS

Interface:	ISO 13628 Type A,B,C
Max Load	Up to 120 tonnes

WHAT'S IN THE BOX

Dependant on Part # Ordered

PART NUMBERS & OPTIONS

A001-360-015	LAOT and LOT Sales Drawing
A036-049-106	LAOT Type A 5.8" Stroke
A036-049-205	LOT Type A 5.8" Stroke
A036-049-110	LAOT Type A 10.75" Stroke
A036-049-210	LOT Type A Head 10.75" Stroke