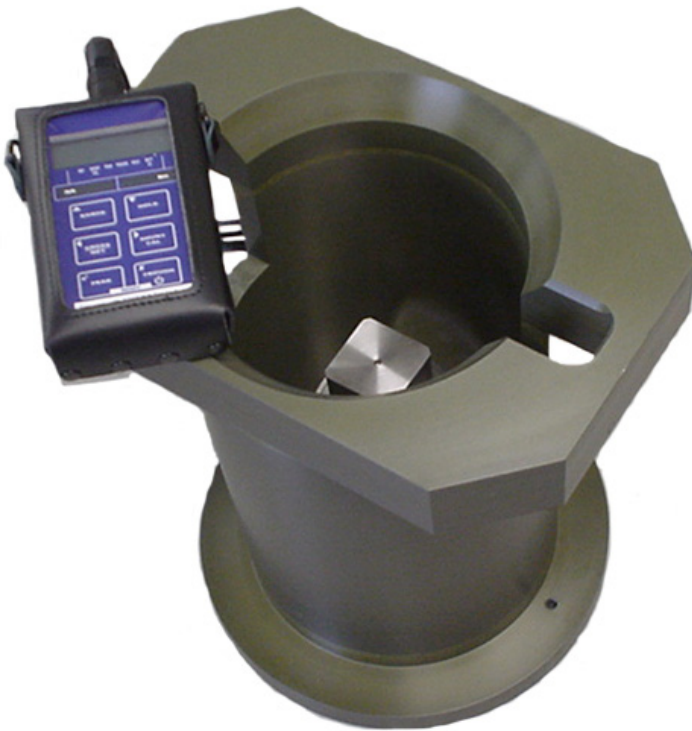


## ISO 13628-8 Class 5 (API 17D) Surface Torque Tool Verification Unit.



### DESCRIPTION

This unit is used to give pre-dive surface confirmation of the torque tool calibration. It consists of a standard ISO class 5 torque reaction bucket with sturdy base and built in torque sensor. The unit comes complete with USB cable to connect to the FORUM Torque Tool Control System for Auto Calibration.

### FEATURES

- ISO 13628-8 Fig 18 (API 17D) Class 5
- Max Torque 6,750Nm (5,000ft lbs)
- Hand Held Digital Read Out
- USB output to Torque Tool Control System
- Supplied in offshore suitable transit case

# ISO 13628-8 Class 5 (API 17D) Surface

## Torque Tool Verification Unit.

### SPECIFICATIONS

Torque Interface:	ISO 13628-8 fig 18 Class 5
Maximum Torque	6,750Nm (5,000ft lbs)
Handheld Unit	Battery Powered
Materials:	Steel Shaft, Aluminium Housing

### WHAT'S IN THE BOX

- Torque Tool Bucket inc sensor
- Handheld Display
- Bucket to Display Cable
- Display to USB Cable
- Operations & Maintenance Manual.

### PART NUMBERS & OPTIONS

A019-995-102	Surface Verification Unit
--------------	---------------------------

