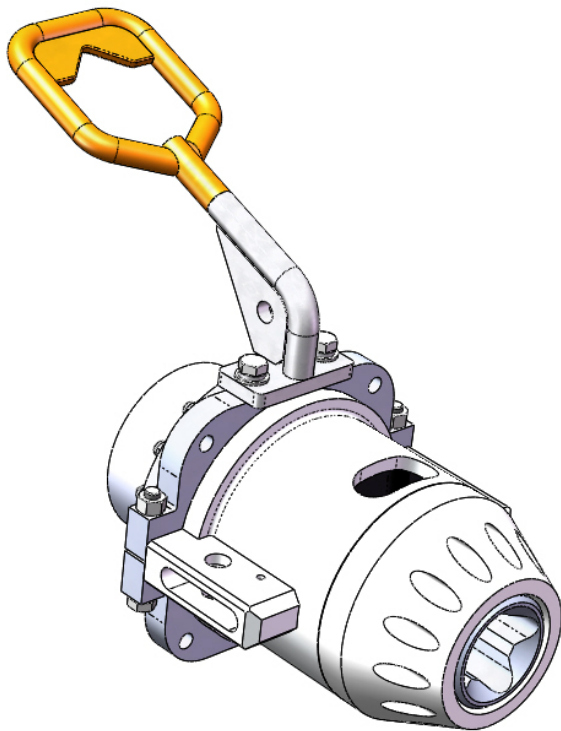


ISO 13628-8 Class 1-4 (API 17D) Hand Operated Torque Tool



DESCRIPTION

The Hand Operated Torque Tool conforms to the ISO 13628-8 Fig 18 interface requirements, it is supplied with a Class 4 socket. Extra sockets can be supplied on request. The tool is intended for operation on the surface to verify the interfaces on subsea equipment and to operate valves without the need for an ROV and a hydraulic supply.

The tool has a built in gearbox to supply torques up to 2,700Nm by hand.

The tool is not recommended for use subsea, but can be used on a temporary basis if suitably packed with grease and cleaned when returned to the surface.

FEATURES

ISO 13628-8 Fig 18 (API 17D) Class 1-4

Max Torque 2,700 Nm (2,000 ft lbs)

Manually operated Torque Tool

Built in 5:1 Gearbox

Uses standard torque tool components

Supplied in offshore suitable transit case

ISO 13628-8 Class 1-4 (API 17D) Hand Operated Torque Tool

SPECIFICATIONS

Torque Interface:	ISO 13628-8 fig 18 Class 1-4
Torque Range	30-2,700 Nm
Socket Size	38.1mm Sq, Class 4
Gearbox Ratio	Five to one
Materials	Steel Motor and Gearbox Duplex Socket Aluminium Housing, Acetal Nose
Handle	D-Type

PART NUMBERS & OPTIONS

A292-107-101	Hand Operated Torque Tool
--------------	---------------------------

WHAT'S IN THE BOX

Gearbox Assembly
Operations & Maintenance Manual.

