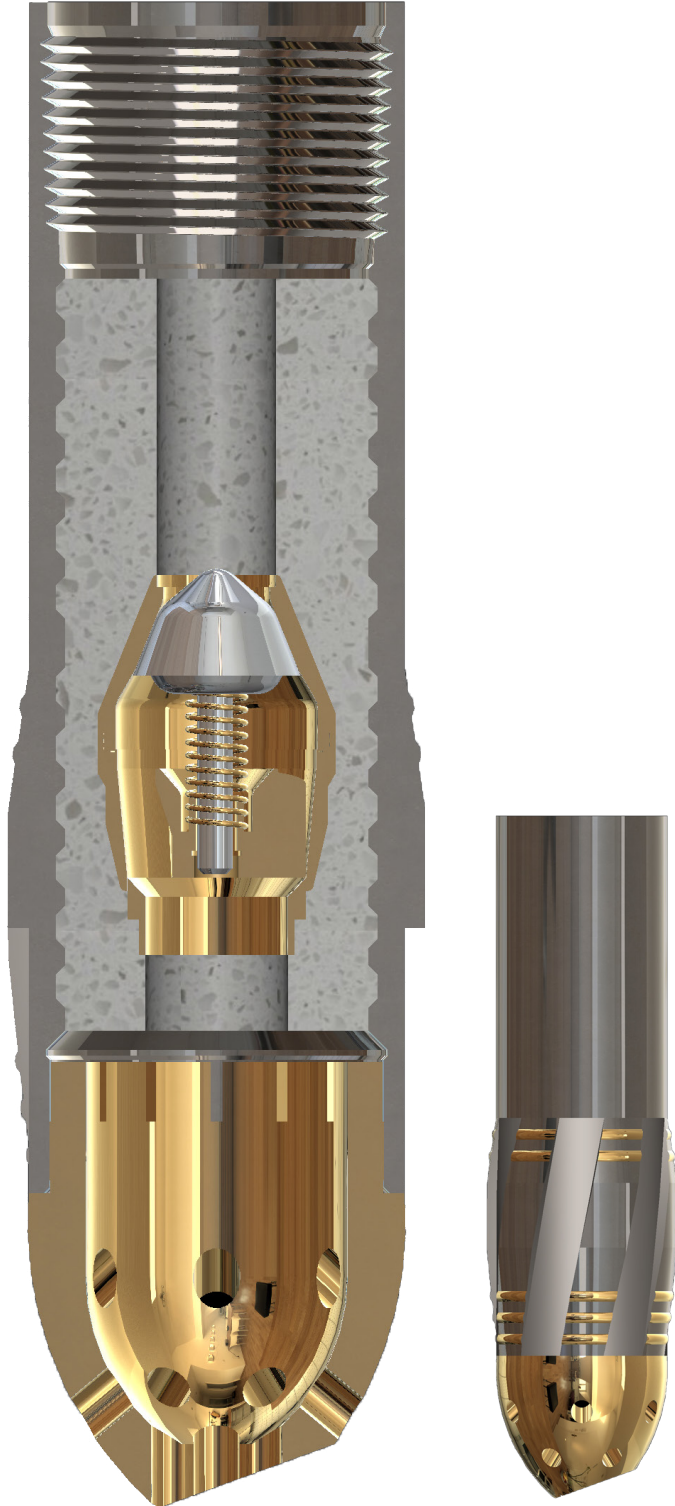


500RM Reamer Shoe



The Davis-Lynch™ 500RM features PVTs check valves, milled angled ribs, and an eccentric round nose. Down-jet ports improve circulation, turbulence and even distribution for well cementing applications even in challenging conditions. Since Forum's purchase of Davis-Lynch over 500 Reamer Shoes have been run.

Applications

- Onshore and offshore wells with unstable formations

Benefits

- Rotation and reciprocation capable, but not required
- Provides superior performance to get casing down through unstable formations
- Not a drill-shoe and will not make a new hole
- PDC drillable

Features

- Eccentric round nose
- Non-aggressive milled ribs with hard-banding
- Manual-fill

*Options

- No valve - guide shoe
- Double valve
- Composite nose
- Auto-fill

*To be specified at time of order. Options cannot be retrofitted.

500RM Reamer Shoe

Data for Davis-Lynch Standard Stock Float Equipment manufactured from K55, L80 or P110 grade material and threaded with API 8rd LT&C, ST&C or Buttress Connections

Nominal Casing Size (In.)	Wt. range (Lbs/Ft)	OD (In.)	ID (In.)	K55 Material		L80/N80 Material		P110 Material		Back-Pressure (psi)	Plug Bump-Pressure (psi)	Cement Nose	Eccentric Nose
				Burst (psi)	Collapse (psi)	Burst (psi)	Collapse (psi)	Burst (psi)	Collapse (psi)			Max. Set-down Weight (lbs)	Max. Set-down Weight (lbs)
4-1/2	9.5-13.5	5.000	4.031	9,330	9,630	13,570	14,000	18,650	19,250	5,000	7,500	13,000	31,000
5	11.5-21.0	5.563	4.439	9,720	9,990	14,140	14,530	19,450	19,980	5,000	7,500	15,000	37,000
5-1/2	14.0-23.0	6.050	4.950	8,750	9,090	12,730	13,220	17,500	18,180	5,000	7,500	19,000	46,000
7	20.0-38.0	7.875	6.366	9,220	9,530	13,410	13,860	18,440	19,060	5,000	7,500	32,000	76,000
7-5/8	20.0-39.0	8.500	6.969	8,670	9,010	12,610	13,110	17,340	18,030	5,000	7,500	38,000	92,000
8-5/8	24.0-44.0	9.625	8.017	8,040	8,420	11,690	12,250	16,080	16,840	5,000	7,500	50,000	121,000
9-5/8	32.3-53.5	10.625	8.921	7,720	8,110	11,230	11,800	15,440	16,200	5,000	7,500	63,000	150,000
10-3/4	32.7-55.5	11.750	10.050	6,960	7,380	10,130	10,480	13,930	13,450	5,000	6,500	79,000	190,000
11-3/4	38.0-65.0	12.750	11.000	6,610	7,030	9,610	9,570	13,210	12,150	5,000	5,500	95,000	228,000
13-3/8	48.0-72.0	14.375	12.615	5,890	5,890	8,570	7,750	11,780	9,560	5,000	5,000	125,000	300,000
16	65.0-109.0	17.000	15.250	4,950	4,290	7,210	5,350	9,910	6,150	4,000	4,000	183,000	n/a
18-5/8	87.5-117.5	19.625	17.755	4,590	3,660	6,670	4,410	9,170	4,980	3,000	3,000	248,000	n/a
20	94.0-133.0	21.000	19.125	4,300	3,160	6,250	3,680	8,590	4,290	3,000	3,000	287,000	n/a

Standard K55 stock Davis Float Equipment meets or exceeds the burst and collapse ratings of L80/N80 & P110 casing depending on casing weight

Back-pressure posted for standard PVTs back-pressure valve

All burst and collapse pressure ratings are calculated in accordance with API bulletin 5C3

Other sizes, materials and threads available upon request

Maximum set-down weight assumes even load distribution