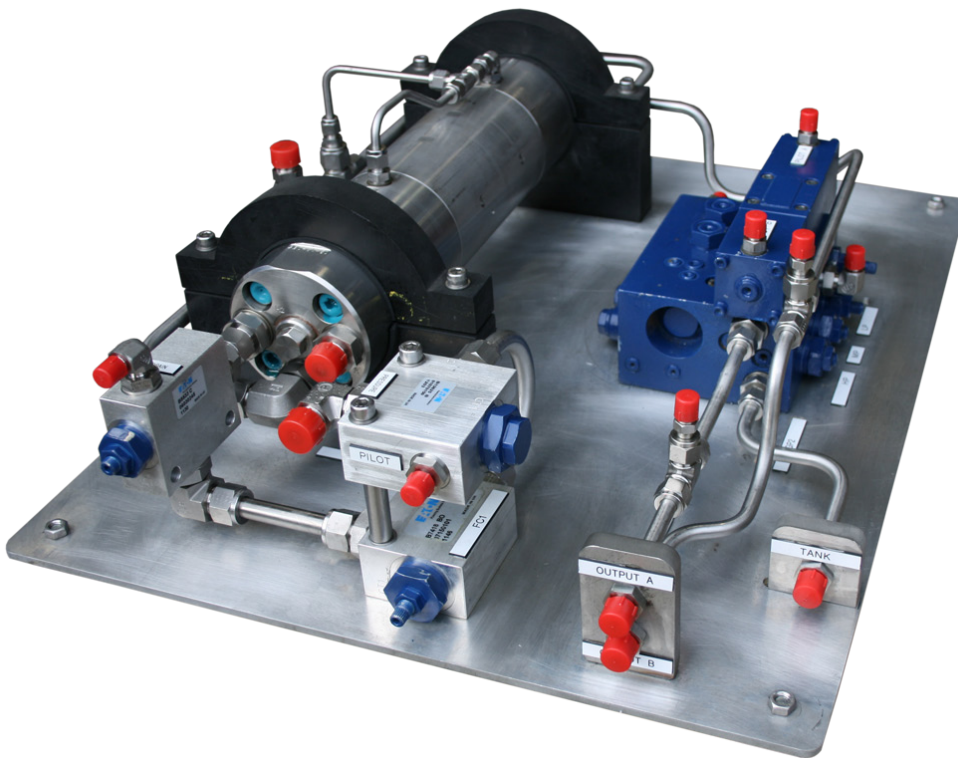


3 Stage Isolated Hydraulic Power Unit (IHPU)

Pumping & Injection Systems.



DESCRIPTION

The 3 Stage IHPU can be used for numerous Subsea applications including pressure testing, BOP operation, fluid transfer and hot stab operations with the capability for 3 selectable pressures each ranging from 580–5000psi. Designed to be easily and simply reconfigured, with the minimum of hassle.

Connection can be made to any sized fluid reservoir and operate using Water/ Glycol and Hydraulic mineral oils as suitable fluid media. The inbuilt depressurisation facility allows safe venting of pressure and pumping fluids back to reservoir avoiding any unwanted leakage to the subsea environment.

FEATURES

- 3 Selectable Pressures
- Directional Control
- Supplied on ROV Friendly Plate
- Supplied with all Hoses

3 Stage Isolated Hydraulic Power Unit (IHPU)

Pumping & Injection Systems.

SPECIFICATIONS

Max Input Pressure	210Bar (3,000psi)
Max Input Flow	60LPM (13.5GPM)
Max Output Pressure	345 Bar (5,000 psi)
Max Output Flow	17LPM (3.8GPM)
Input fluid	Mineral Oil
Output Fluid Options	Seawater Mineral Oil Water Based Glycol

PART NUMBERS & OPTIONS

SRTS-04	3 Stage IHPU
SRTS-04-S	Remote location spares kit

WHAT'S IN THE BOX

3 Stage IHPU
Operational hoses
Operation & Maintenance Manual