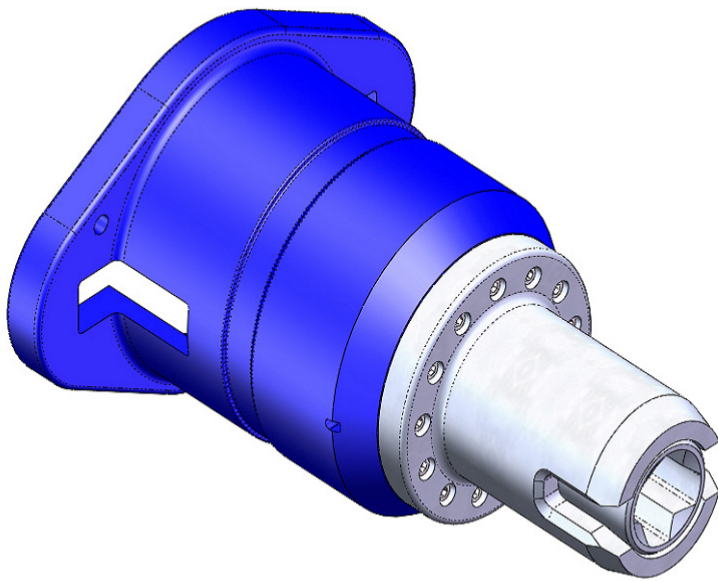


17D (Female) TO 17H (Male) Torque Tool Adapter Torque Tool Accessories.



DESCRIPTION

The adaptor is used to convert from ISO 13628-8 Class 4 (API 17D) to API 17H High Torque interface. Shear pins are supplied with the tool to protect the high torque interface from over torque.

FEATURES

- ISO 13628-8 Class 4 Female Bucket
- API 17H Male interface 35mm AF square
- Max Torque 2,700 Nm (2,000 ft lbs)
- Supplied with 900Nm and 2,700Nm Shear Pin
- Supplied in offshore suitable transit case

17D (Female) TO 17H (Male) Torque Tool Adapter

Torque Tool Accessories.

SPECIFICATIONS

Female Interface:	ISO 13628-8 fig 18 Class 1-4
Male Interface	ISO 13628-8 Fig 14 High Torque
Maximum Torque:	2,700Nm (2,000ft lbs)
Weight in air/water:	14/10kg

WHAT'S IN THE BOX

Adaptor
Shear Pins

PART NUMBERS & OPTIONS

A019-959-450	17D (Female) TO 17H (Male) Torque Tool Adapter
A019-958-152/02	Surface Verification Unit
A019-958-174	High Torque Tool Adaptor for Verification Unit (Includes adaptor and 35mm AF Square Shaft)

