

## FR120 & FR120-C

Forum Energy Technologies and its drilling contractor partners introduce the latest engineered product developed for performance and reliability – The FR120 and FR120-C.

The FR120 iron roughneck takes on the toughest job on an oil rig – making up and breaking out drillpipe, drill collars and BHA.

The compact FR120-C provides all of the features of the FR120, but has a smaller footprint to fit on rig floors with limited space.

### Features

- Handles API and Premium XT\*, TT\*, VAM\*\* and other extended length threaded tool joints
- Standard hydraulic pilot operated controls (Electrical version available)
- High torque spinner
- 45° Torque rotation
- Three jaw torquing system
- Spinning Wrench Thread Compensation
- Designed in accordance with API 7K



### Customer Testimonial

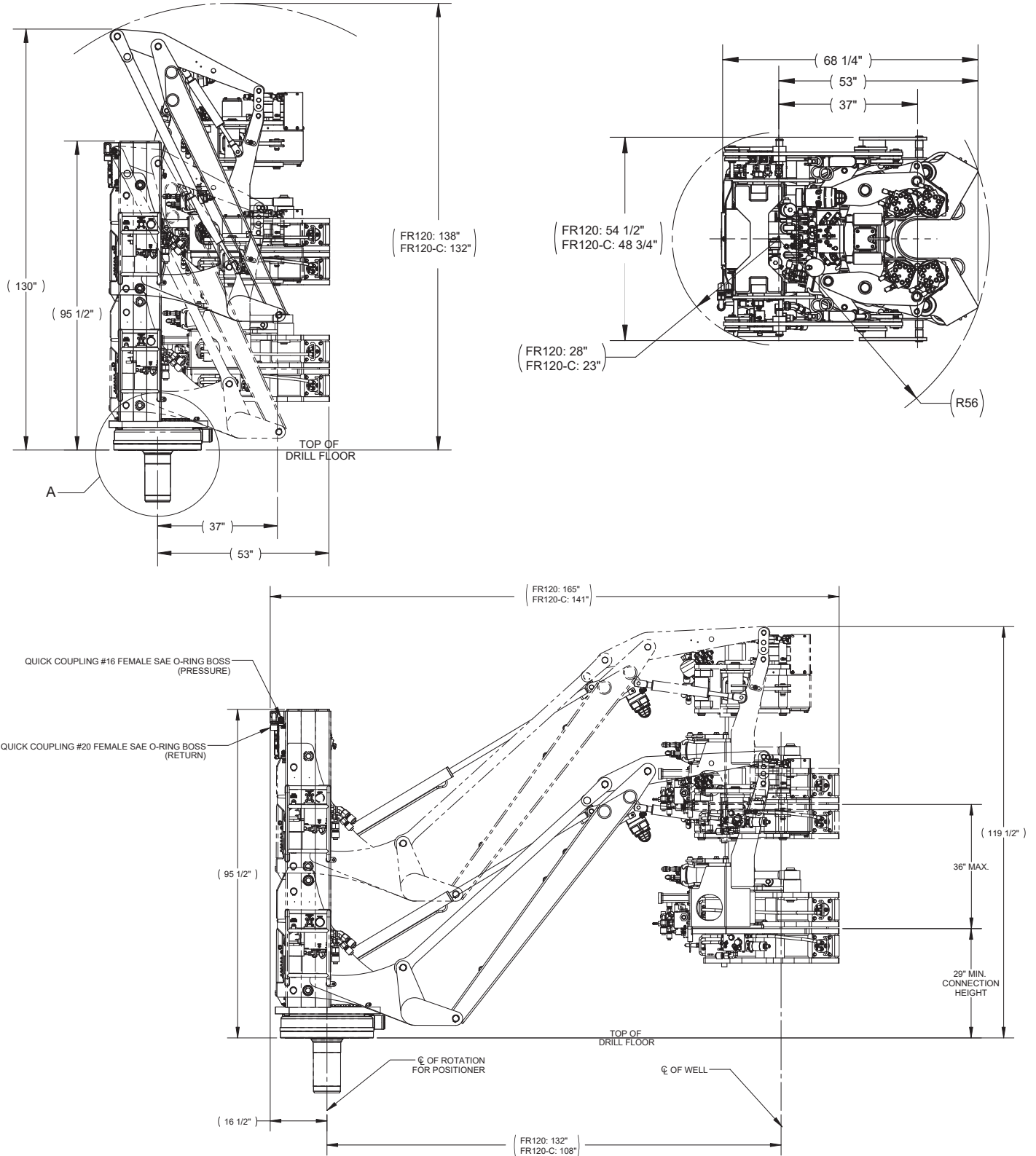
“When we decided to upgrade our drill pipe for horizontal applications, we started looking into the various pipe handling tools with our current contractor. We knew that the current systems would either need to be upgraded or replaced, but there were limited proven options in the field at the time. Our drilling contractor mentioned the compact version of the FR120 and we were intrigued with its capabilities and design. Any time we have a key component in our operation, such as an iron roughneck, we want to make sure it is over built and minimizes downtime as much as possible. After using the FR120 for close to a year now we continue to be impressed with its capabilities and reliability, especially compared to our previous tools and the high torques we are now experiencing.”

Ryan Watson  
CrownQuest Operating, LLC  
Drilling Manager

Application	Larger Land Rigs and Jackups	Smaller Land Rigs and Jackups
Tool Name	FR120	FR120-C
Torque: Make-up	100,000 ft lb	
Torque: Break-out	120,000 ft lb	
Connection OD	4" - 9.75"	
Torque Rotation Angle	45°	
Tubular Range	3.5" - 9.75"	
Spinner Torque	3000 ft lb	
Spinner Thread Compensation	±5"	
Effective Horizontal travel	96"	72"
Reach	132"	108"
Vertical Travel	36"	
Slew Angle	±179°	
Minimum Connection Height	27"	
Ambient Temperature Range	-20°C to +45°C	
Weight	12000 lbs	11000 lbs
Height Stowed	96"	96"
Depth	70"	
Width	55"	48.75"
Min Flow	45 gpm	
Min Pressure	2500 psi	
Meets API 7K Design Requirements	✓	

## FR120 & FR120-C

### Design Specifications



Copyright © FORUM ENERGY TECHNOLOGIES, INC. • All rights reserved • DRL1170.01.2022