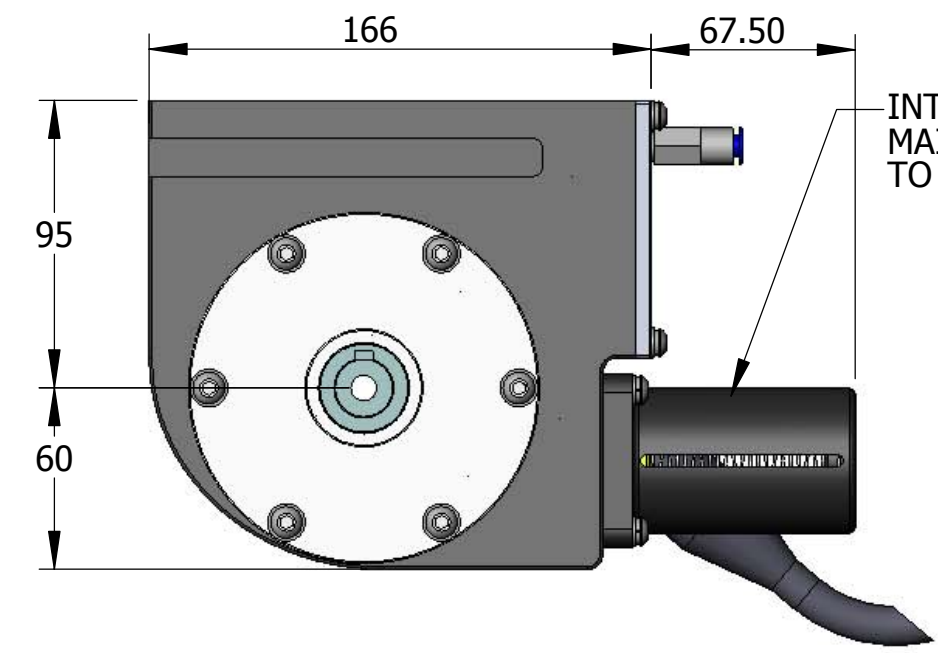
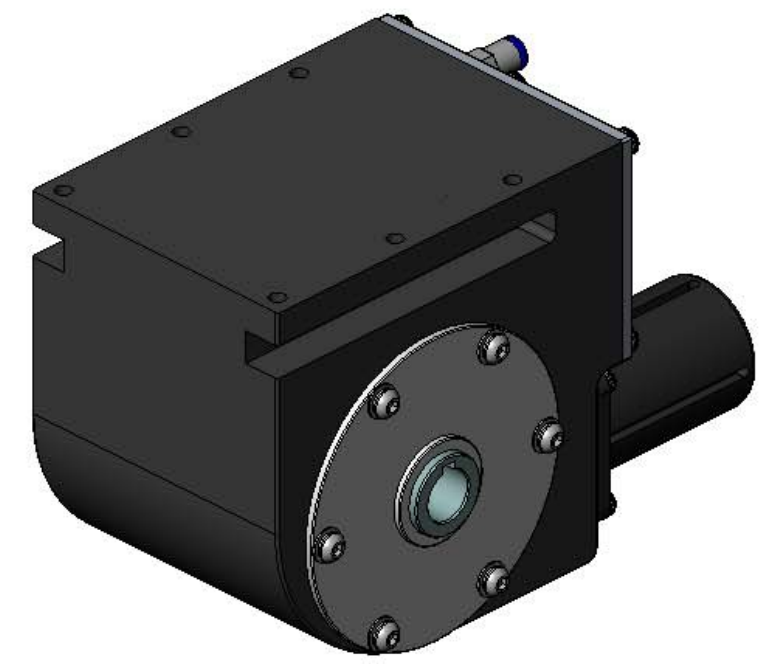
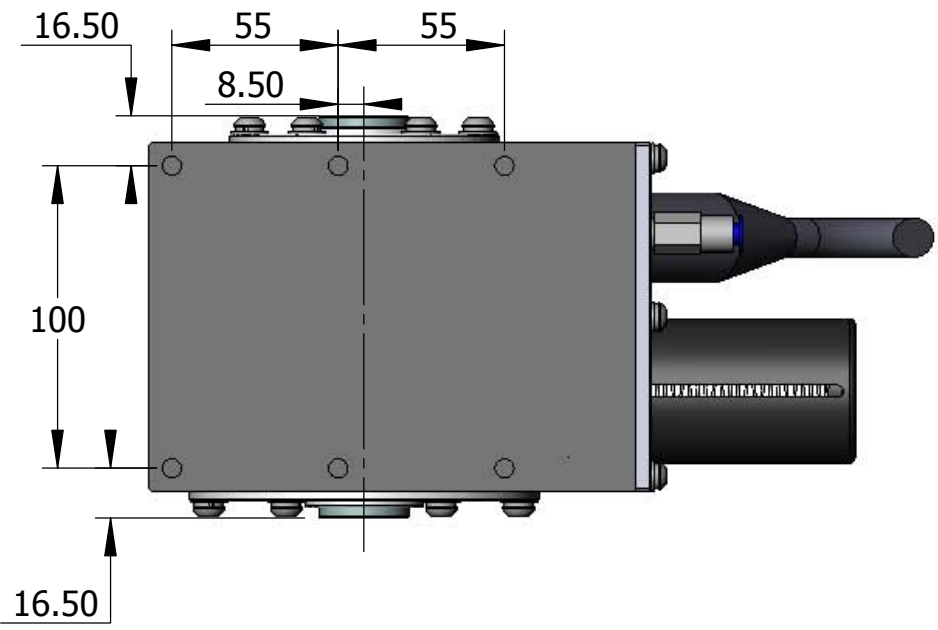


IF IN DOUBT - ASK!

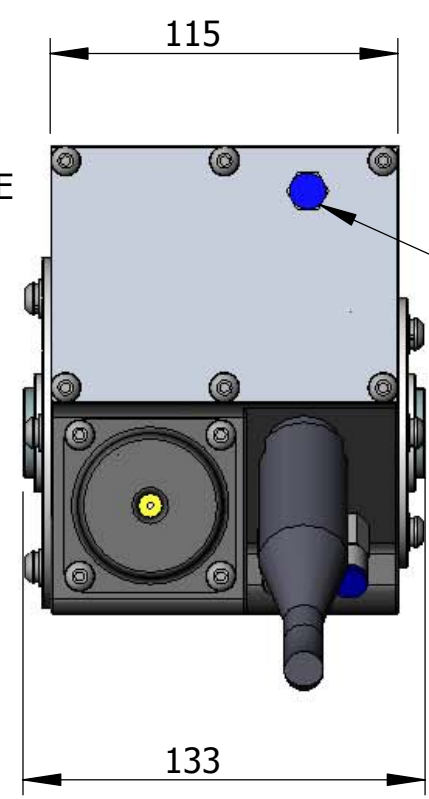
ROTATOR ACTUATOR SPECIFICATION

REMOVE SHARP EDGES

INPUT VOLTAGE - 24 VDC
 NOMINAL CURRENT 2.2 AMPS INTERMITTANT, 1.8 AMPS CONTINUOUS
 NOMINAL OUTPUT TORQUE - 50Nm INTERMITTANT, 40Nm CONTINUOUS
 NOMINAL OUTPUT SPEED - 2.3 RPM
 INTEGRAL CURRENT LIMITING
 ROTATION - CONTINUOUS
 WEIGHT IN AIR 5.45Kg
 WEIGHT IN SEA WATER 3.16Kg
 OIL CAPACITY 0.5Litres
 ELECTRICAL CONNECTOR - PREFERENTIAL CONNECTOR ON CABLE END
 OUPUT SHAFT BORE ϕ 19 (H7) WITH KEY 6 x 6 x 25 AND M8 x 60 BOLT
 PRESSURE COMPENSATION - INTEGRAL COMPENSATOR, FILL & BLEED,
 PUSH FIT CONNECTORS AND RELIEF VALVE

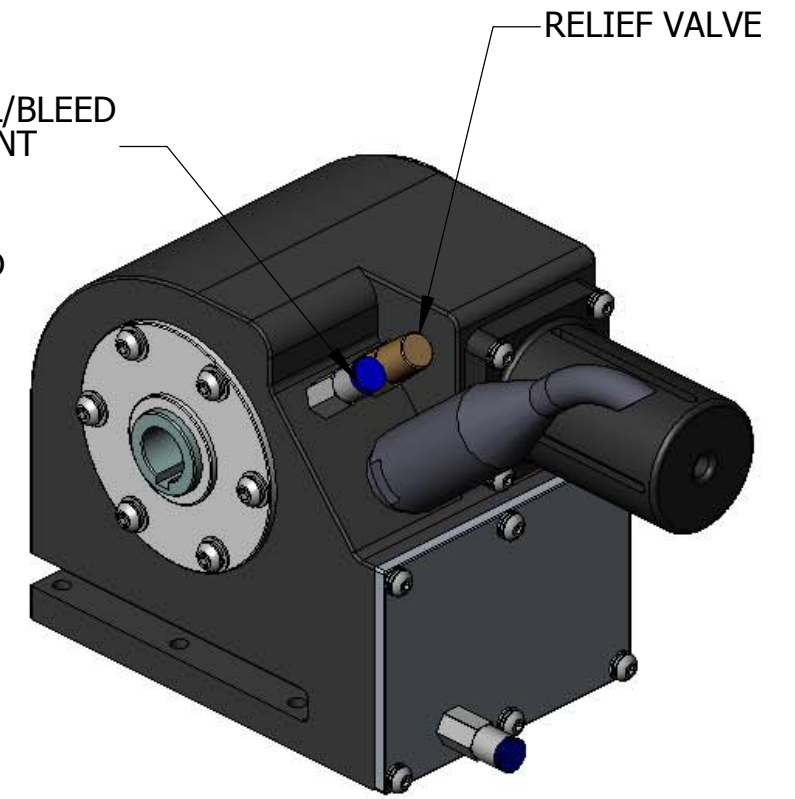


INTEGRAL SPRUNG COMPENSATOR MAINTAINS 0.5 BAR OVERPRESSURE TO AMBIENT PRESSURE



FILL/BLEED POINT

FILL/BLEED POINT



REV	BY	DATE	DESCRIPTION	APP
3	GDU	15/05/06	SHORTER SHAFT AND END COVER SHOWN	
2	GDU	16/08/04	NOTES ADDED	
1	EBR	29/01/04	ISSUED FOR INFORMATION	CMI
RECORD OF REVISIONS				

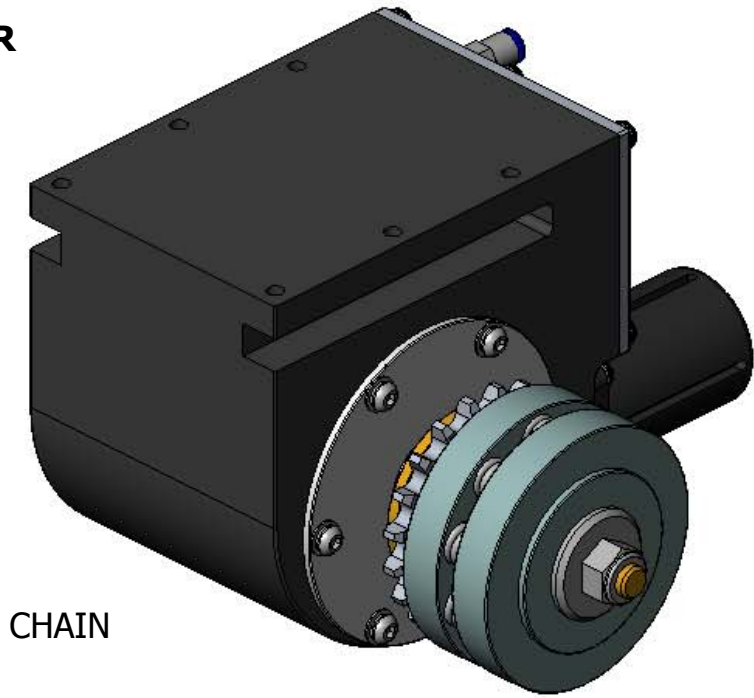
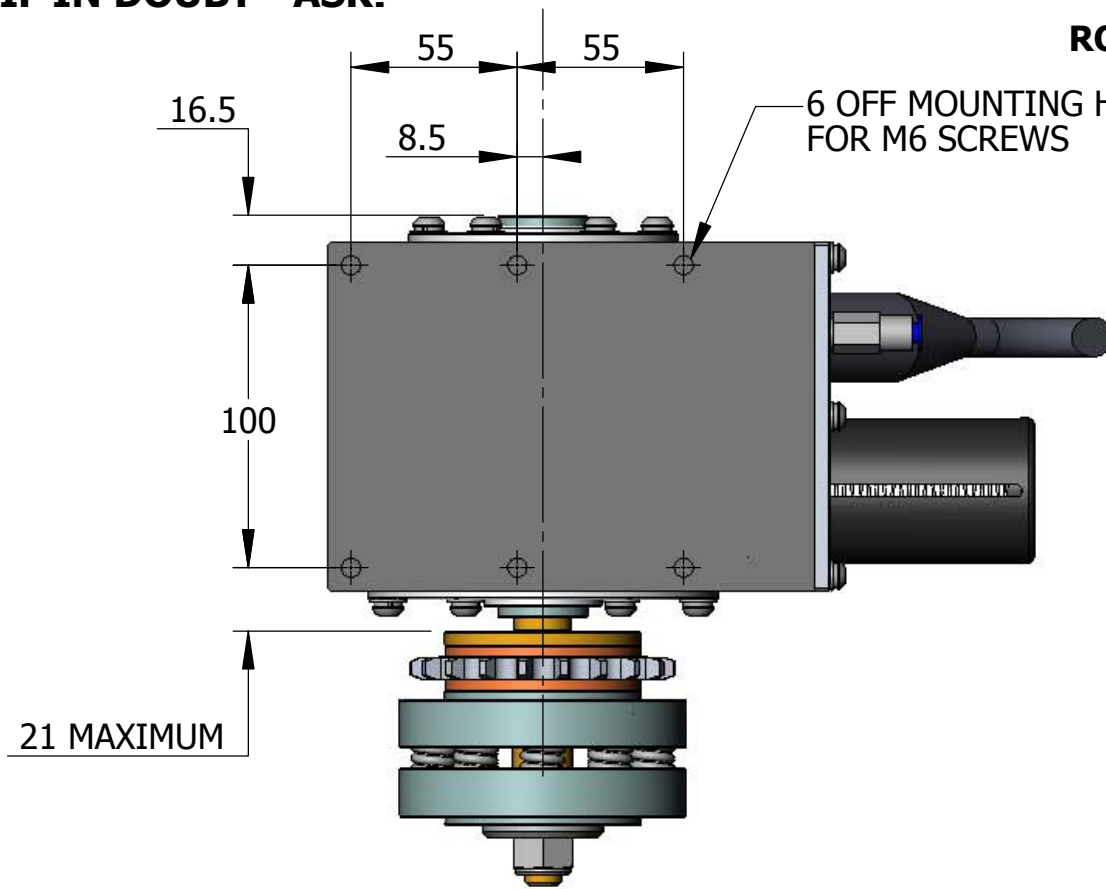
MATERIAL -	WT AIR	WT WATER
	- kg (E) -	kg (E)
FINISH -	DRAWN	EBR
	DATE	29/01/04
USO, TOLERANCES TO BE	CHECK	GDU
	APPRV.	CMI
	ENGR.	CMI

sub-Atlantic
 Unit 12, Airways Industrial Estate
 Pitmedden Road, Dyce,
 Aberdeen. U.K. AB21 0DT
 Tel: ++44 (0) 1224 723623
 Fax: ++44 (0) 1224 723822
 SCALE (USO) 1 : 2.5 ORIG. SIZE A3

PROJECT	PAN & TILT Mk 2	
TITLE	ROTATOR ACTUATOR 50Nm- GENERAL ARRANGEMENT Sheet 1 of 2	
DOC. No.	2335-GA	REV 3

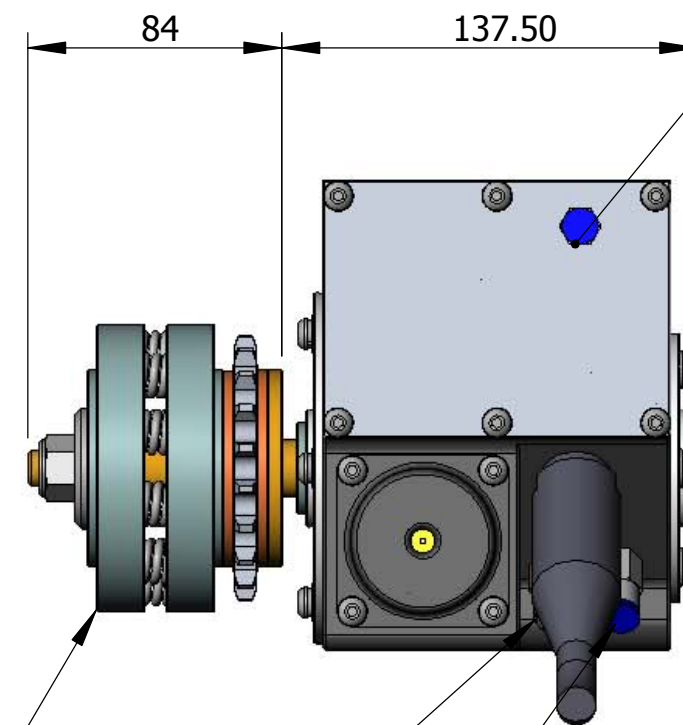
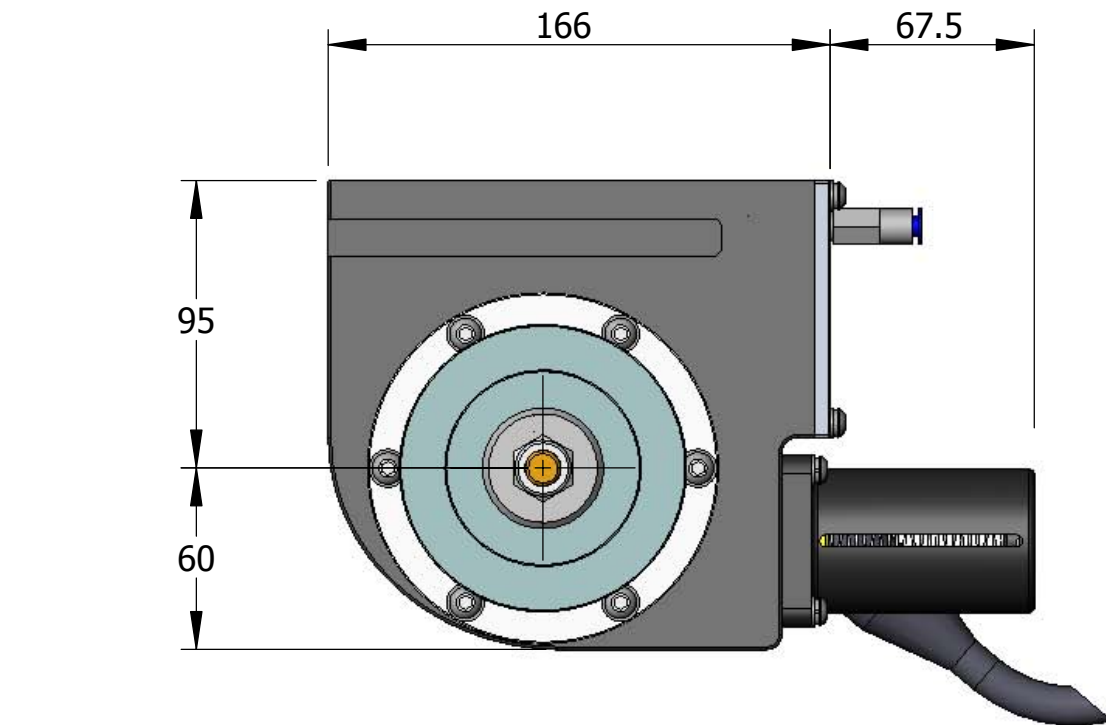
IF IN DOUBT - ASK!

ROTATOR ACTUATOR FITTED WITH TORQUE LIMITER



TORQUE LIMITER SPECIFICATION

SPROCKET - 20 TEETH, 1/2" PITCH FOR ϕ 8.5 ROLLER CHAIN
 CLUTCH TORQUE SETTING - ADJUSTABLE
 WEIGHT IN AIR 1.93Kg
 WEIGHT IN SEA WATER 1.62Kg

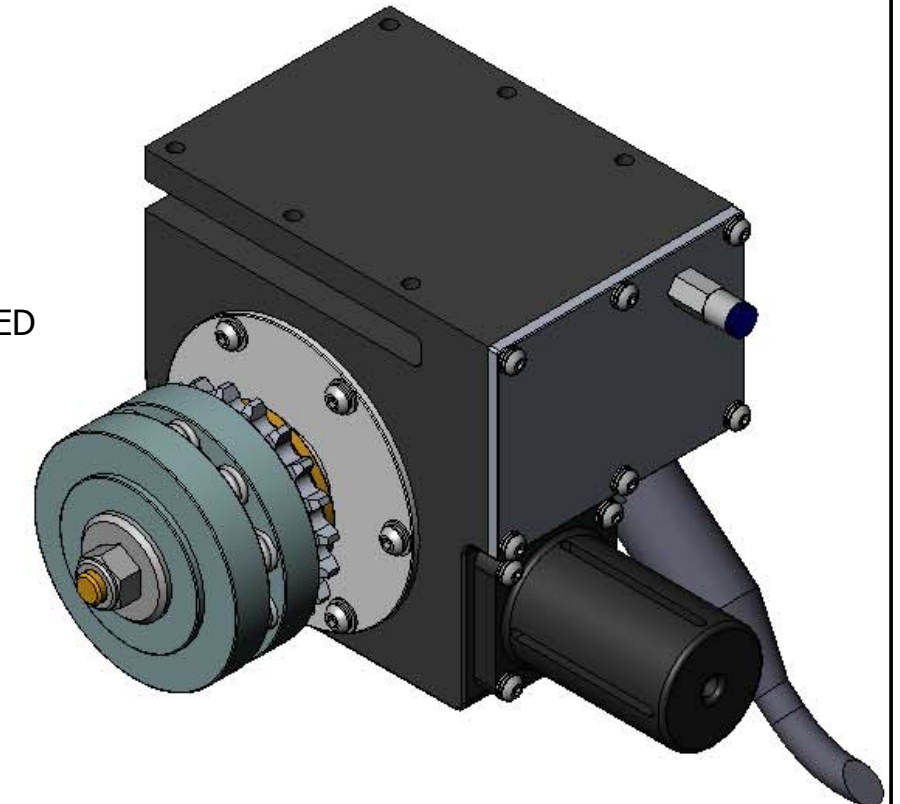


FILL/BLEED POINT

TORQUE LIMITING CLUTCH

RELIEF VALVE

FILL/BLEED POINT



Unit 12, Airways Industrial Estate
 Pitmedden Road, Dyce,
 Aberdeen. U.K. AB21 0DT
 Tel: ++44 (0) 1224 723623
 Fax: ++44 (0) 1224 723822

SCALE (USO) 1 : 2.5
 ORIG. SIZE A3

PROJECT	PAN & TILT MK 2		
TITLE	ROTATOR ACTUATOR 50Nm- GENERAL ARRANGEMENT Sheet 2 of 2		
DOC. No.	2335-GA	REV	3