

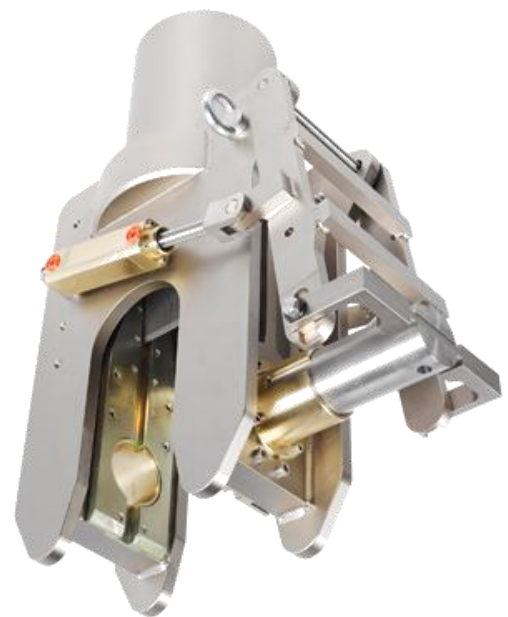
4" (115mm) Wire Rope Cutter

The RCV models are heavy duty wire rope cutters designed for use in severe working conditions such as offshore. The RCV cutters feature stainless steel or lightweight aluminium construction and have been specifically designed with ROV applications in mind. The RCV range of cutters feature hydraulically powered anvil pins for remote actuation.

Note the tool needs to be used in conjunction with Intensifier Panel A036-081-001.

Features.

- Cuts up to 115mm 1770N/mm² Wire
- Supplied with ROV mount bracket.
- Hydraulic Retract



Specifications.

Operating Pressure	690Bar (10,000PSI)
Max Wire Diameter	115mm
Max wire strength	1,770N/mm ²
Weight in air	125kg

What's in the box.

- A036-026-190**
- 4" (115mm) cutter
 - ROV Handle
 - Manual
- All items supplied in Peli style packing case.

Optional Extras.

A036-081-001	Intensifier Panel.
A036-026-190/spares	Basic Spares Kit.

Data Sheet: A001-350-139 issue 1

The specification details are illustrative for marketing purposes only. Actual equipment may be different as a result of product improvement or other reasons. Specific interface and performance information should be reconfirmed at time of order placement.

www.f-e-t.com

FET RUM™
ENERGY TECHNOLOGIES

Houston | Aberdeen | Kirkbymoorside, UK | Singapore