

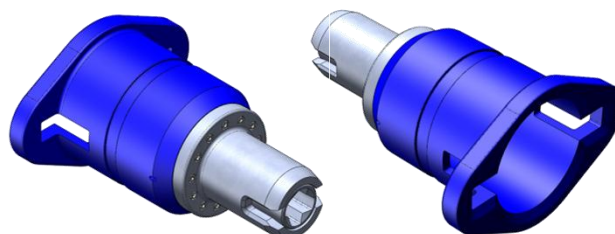


# 17D (FEMALE) TO 17H (MALE) ADAPTER

The adaptor is used to convert from ISO 13628-8 Class 4 (API 17D) to API 17H High Torque interface. Shear pins are supplied with the tool to protect the high torque interface from over torque.

## Features.

- ISO 13628-8 Class 1-4 Torque.Tool Female Bucket
- API 17H Male interface 35mm AF square
- Available with Shear Pin



## Specifications

Female Interface:	ISO 13628-8 fig 18 Class 1-4
Weight in air	14kg

## What's in the box.

**A019-959-450**

- Adaptor
- Shear Pins



Data Sheet: A001-350-136 issue 1

The specification details are illustrative for marketing purposes only. Actual equipment may be different as a result of product improvement or other reasons. Specific interface and performance information should be reconfirmed at time of order placement.

[www.perryslingsbysystems.com](http://www.perryslingsbysystems.com)

Houston | Aberdeen | Kirkbymoorside, UK | Singapore

**FXRUM**<sup>TM</sup>  
ENERGY TECHNOLOGIES