

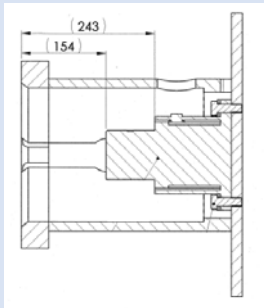


Class 6 & 7 Torque Verification Unit.

This unit is used to give pre-dive surface confirmation of the torque tool calibration. It consists of a standard ISO class 6/7 torque reaction bucket with sturdy base and built in torque sensor. The unit comes complete with USB cable to connect to the PSS Torque Tool Control System for Auto Calibration. The ISO standard is unclear on bucket depth so it is best to check detail drawings before purchase. Two variants of the unit exist. The low range version can be used up to 17kNm and has adaptor for both Class 6 and Class 7 tools. The high range version of the unit can be used up to 34kNm and has a Class 7 input square only.

Specifications A019-962-232.

Interface: ISO 13628-8 fig 18 Class 7
 Maximum Torque: 34,000Nm (25,000ft lbs)
 Input Square: Class 7 (3.5" Square) Adaptor
 Materials: Steel Shaft, Aluminium Housing



What's in the box.

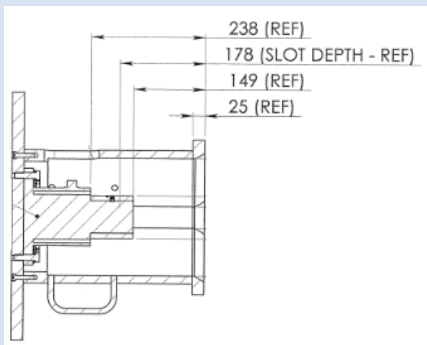
A019-962-232

- Torque Tool Bucket inc sensor
- Handheld Display
- Bucket to Display Cable
- Display to USB Cable



Specifications A019-962-151.

Interface: ISO 13628-8 fig 18 Class 6 & 7
 Maximum Torque: 20,000Nm (15,000ft lbs)
 Input Square: Class 6 (2-5/8" Square)
 Class 7 (3.5" Square) Adaptor
 Materials: Steel Shaft, Aluminium Housing



Datasheet number A001-350-127_iss_2

What's in the box.

A019-962-151

- Torque Tool Bucket inc sensor
- Handheld Display
- Bucket to Display Cable
- Display to USB Cable



The specification details are illustrative for marketing purposes only. Actual equipment may be different as a result of product improvement or other reasons. Specific interface and performance information should be reconfirmed at time of order placement.