



# XLX Docking Beam.

The docking beam is bolted to the front of an XLX vehicle and is used to dock onto subsea structures. The beam is supplied complete with two ISO13628-8:2002 Fig 7 docking latches. The beam includes two anodes and all hoses to connect to an aux function on the ROV.

Also available is the docking plate assembly, this is bolted to the sub-sea structure to provide an interface for the docking beam.

## Features.

- Constructed from Aluminium
- Two off ISO 13628-8 Docking Latches.
- Weight in air 25kg
- 210 Bar Working Pressure.
- Manip guards need to be removed to mount.

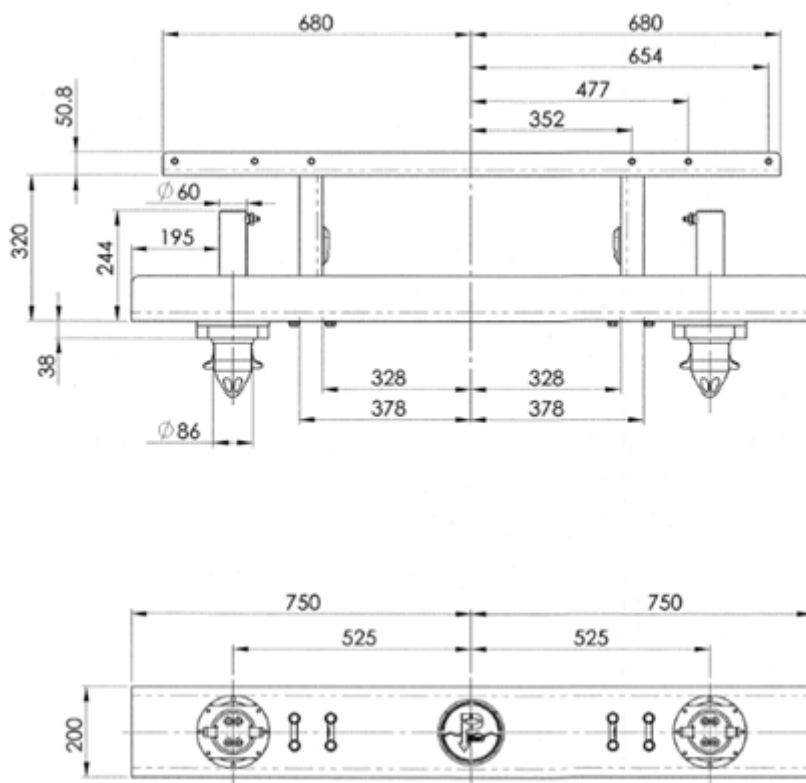


## Part Numbers & Options

- A036-009-500 Docking Beam for XLX
- A036-009-514 Docking Plate Assembly

Data Sheet: A001-350-126 issue 2

### A036-009-500 Docking Beam for XLX.



**A036-009-514: Docking Plate Assembly.**



The specification details are illustrative for marketing purposes only. Actual equipment may be different as a result of product improvement or other reasons. Specific interface and performance information should be reconfirmed at time of order placement.