

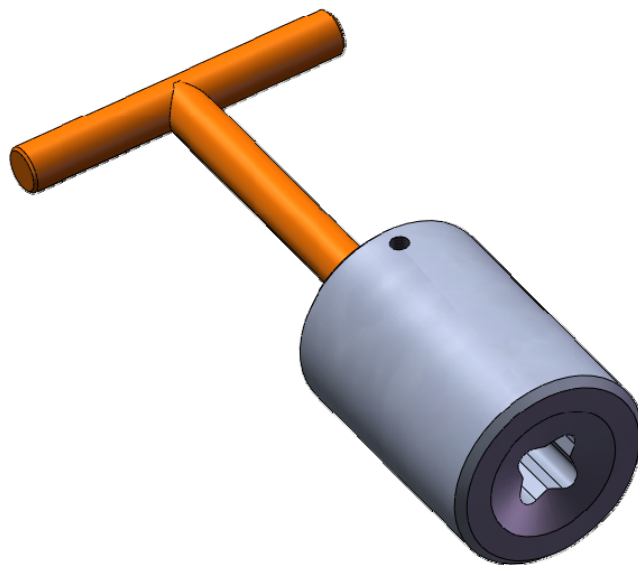


Manipulator Operated Torque Tools .

The tool is used to operate ISO Class 1-2 interfaces without the use of a torque tool. The tool utilises the rotate function on the manipulator to generate the required torque.

Features

- ISO 13628-8 Fig 18 (API 17D); Class 1-2.
- Direct Manipulator Operation.
- Stainless steel construction.



Specifications.

Interface:	ISO 13628-8 fig 18 Class 1-2 Socket
Maximum Torque:	Dependant on manipulator
Materials:	Stainless Steel
Weight:	3kg in air

Data Sheet: A001-350-111 issue 2

What's in the box.

- A019-958-480
- Tool with socket

The specification details are illustrative for marketing purposes only. Actual equipment may be different as a result of product improvement or other reasons. Specific interface and performance information should be reconfirmed at time of order placement.