



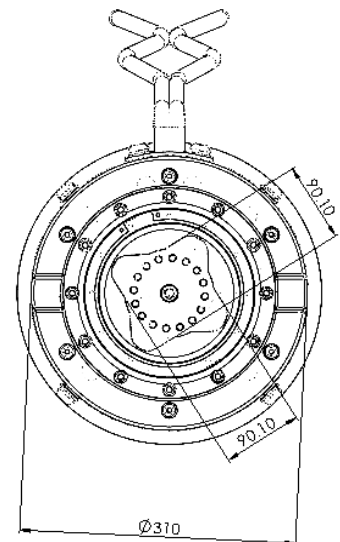
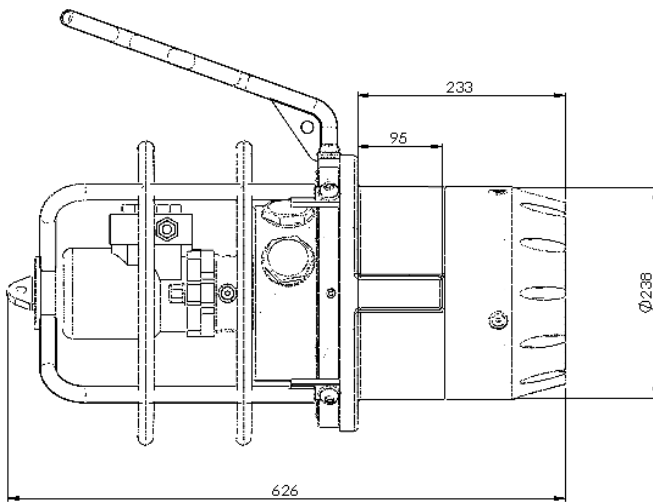
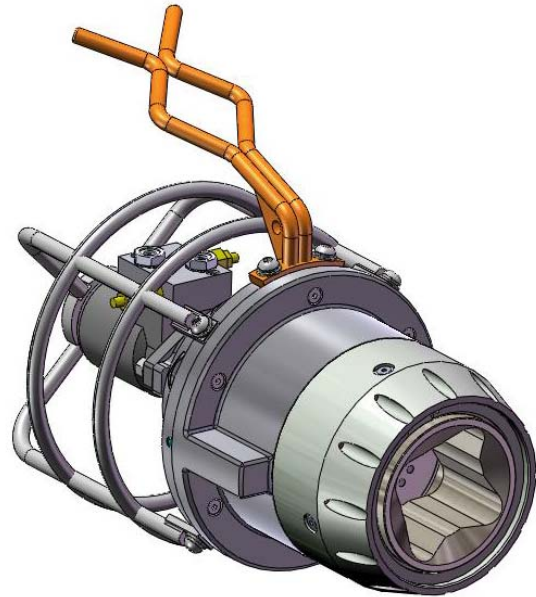
17kNm Torque Tool

This torque tool has been specifically developed to address the increasing requirement for a 17kNm Tool. The interface is based on the ISO 13628-8 Fig 18 Class 7, with the exception of the length of the nose of the tool, this is based on the industry standard. The tool can be supplied with a Class 6 Socket option.

The tool can be supplied with a hot stab receptacle, electronic turns counter and integrated compensator unit, to allow the tool to be deployed to the sub-sea work site in a basket, separate from the ROV and then connections made with a hot stab.

Features

- 17kNm Maximum Torque
- Available with Class 6 or Class 7 socket
- 68kg in Air/ 49kg in Water
- Visual Turns Counter
- Internal dual electronic turns counter
- Basket Deployable.



ALL DIMENSIONS ARE REF

Specifications		Options
Interface:	ISO 13628-8 Fig 18 (Reduced Length)	<ul style="list-style-type: none"> ■ Hot Stab Interface ■ Torque Tool Control System ■ Torque Verification Unit ■ Battery powered, tool mounted electronic turns display. ■ Handle to suit client preference ■ Class 6 socket
Socket Sizes Options:	3-1/2" Square 2-5/8" Square	
Maximum Torque:	17,000Nm @ 140 Bar	
Materials:	Steel motor and gearbox, Titanium socket, Aluminum housing, Acetal nose	
Weight:	68 kg in air / 49 kg in water	
Hydraulic Oil:	Mineral Oil	
Hydraulic Connections	1/4" JIC or 1/4" Swagelok fittings	
Electrical:	8 Pin Burton style Connector	
Sensors:	Internal, twin inductive style	
Case:	Offshore suitable Peli/Explorer	
Manual:	PSSL Standard Documentation	
Data Sheet: A001-350-010 issue 4		

The specification details are illustrative for marketing purposes only. Actual equipment may be different as a result of product improvement or other reasons. Specific interface and performance information should be reconfirmed at time of order placement.